

Challenge 8

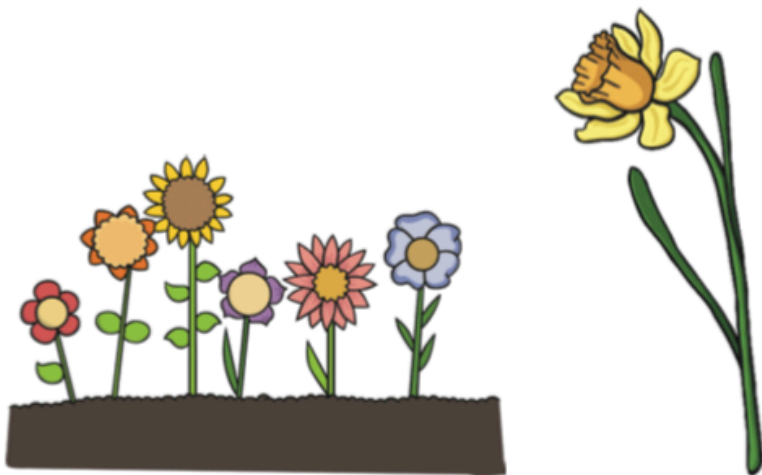
The Mystery of the Missing Daffodils Problem Solving Game

Instructions



Every year, Littlewood Village enter the Village in Bloom competition. The village has won the grand trophy for the last four years! They are very proud of the beautiful flower displays in the village.

However, this year, a serious crime has been committed. Somebody has stolen all the daffodils from the flower beds and pots!

As Chief Inspector, it is up to you and your team to track down the thief. The descriptions of the people involved in the planting and maintenance of the gardens, have all been written down. Solve the five clues and work out who the daffodil thief is. Good luck!



Name	Male or Female	Height	Hair Colour	Colour of gloves	Wore glasses
Terry Thomas	M	tall	brown	red	No
Marion Winters	F	short	grey	blue	Yes
Barbara Castle	F	short	brown	red	Yes
Gary Deal	M	tall	blonde	red	No
Shane Twill	M	short	grey	blue	Yes
Gordon Ledge	M	tall	brown	blue	No
Roy Walker	M	short	grey	red	No
Larissa Coomb	F	short	grey	red	Yes
Morag Jones	F	tall	brown	blue	Yes
Annie Sugden	F	tall	brown	red	No
Kitty West	F	short	blonde	red	Yes
Akal Singh	M	tall	brown	red	No
Betty Driver	F	short	grey	blue	Yes
Lisa Hall	F	tall	blonde	red	No
Doug Leather	M	short	brown	blue	Yes

 **Clue 1** 
It's in the Shapes

Add together the sides of each shape in the calculations below. Then find the answer in the box below, to work out the first clue. Then rearrange the words so they make a sentence.

1.  +  +  =

2.  +  +  =

3.  +  +  =

4.  +  +  =

2	14	9	7	8	3
hat	more	bicycle	blonde	the	male
10	20	11	5	12	6
thief	red	was	before	lady	short

Answer to clue 1 _____

 **Clue 2** 
What's Missing?

Fill in the missing numbers in these number statements to solve the next clue.

$12 + \square = 28$

$28 - \square = 8$

$5 + \square = 31$

$24 - \square = 20$

$\square + 3 = 43$

$\square - 5 = 11$

$\square + 16 = 22$

$\square - 13 = 39$

If all the answers are **odd**, the thief was **male**.

If all the answers are **even**, the thief was **female**.



Put a circle around the correct answer.

Answer to clue 2: The daffodil thief was **male / female**.



Clue 3

All about the Twos and Fives

Colour all the numbers which are multiples of 2 or 5. Then order the words into a sentence, to work out the next clue.

45 the	13 but	27 female	15 pair	41 daffodils	18 beds
91 pots	24 found	33 tulips	87 under	29 dug	60 a
11 ground	21 person	63 tall	45 flower	14 near	47 next
100 glasses	25 were	17 lost	39 bulbs	35 of	51 bad



Answer to clue 3: _____



Clue 4


Money! Money! Money!

Add together the coins.

Then work out the change from £1.

Find the amounts in the box below, order the words into a sentence and solve the fourth clue.

	Amount	Change from £1


Clue 4

Money! Money! Money!

21p blonde	78p male	36p the	12p could
99p found	45p thief	33p plants	30p had
60p red	81p robber	52p gloves	50p half

Answer to clue 4: _____


Clue 5

Match 'Em Up!

Draw a line to match the calculations, then rearrange the letters to spell out the thief's hair colour.

$2 + 2 + 2 + 2$

6×10
b

$5 + 5$

2×8
r

4×5
l

$10 + 10 + 10$

4×2
o

10×7
w

$2 + 2 + 2 + 2 + 2 + 2$

6×2
n

3×10
d

$10 + 10 + 10 + 10 + 10 + 10$

5×3
y

$5 + 5 + 5 + 5$

2×5
e

Answer to clue 5: The thief's hair was _____

The thief was: _____